

Epilepsy Seizure Detection Using Wavelet Support Vector Machine Classifier

Prabhpreet Kaur Bhatia and Anurag Sharma

CTITR, Jalandhar

prabhpreet.bhatia91@gmail.com, er.anurags@gmail.com

Abstract

Epilepsy is a perilous neurological disease covering about 4-5% of total population of the world. Its main characteristics are seizures which occur due to certain disturbance in brain function. During epileptic seizures the patient is unaware of their physical as well as mental condition and hence physical injury may occur. Proper health care must be provided to the patients and this can be achieved only if the seizures are detected correctly in time. In this dissertation work, a system is designed using wavelet decomposition method and different training algorithms to train the neural network for classification of the EEG signals. The system was tested and compared with Support Vector Machine (SVM) classifier. The system accuracy comes out to be 99.97%.

Keywords: *Electroencephalogram, Epilepsy, Wavelet Transform, Energy Distribution, Neural Network*

1. Introduction

After stroke, epilepsy is the second most common neurological disorder affecting approximately 4-5% of the world's population [1-3]. Epilepsy is a neurological anarchy manifest by impulsive intermittent episodes of sensory commotion. Persistent, uncontrolled, spastic seizure activities are the main characteristics of epilepsy. It is the result of a sudden disturbance of brain function and these are mainly result of certain unwanted and asynchronous firing in cerebral neurons.

The medical condition of epilepsy is as old as human existence [3]. There have been many strategies to detect such firing or seizure activities in the brain. Electro-Encephalogram (EEG) is the most common technique for detection of these electrical activities [18]. It is a non-invasive technique used to acquire electrical impulses travelling through scalp. Although there are certain techniques for continuous detection of these seizures such as Epilepsy Monitoring Unit (EMU), electro cardio graph, accelerometry and electro dermal systems but these are very costly and time consuming method and hence not much preferred.

Even though anti-epileptic drugs have been helped many patients but roughly one-third of them are unresponsive to those too [4]. So, researchers and doctors came together to find such a elucidation which can help both doctors and patients to perceive as well as help to envisage seizures even before they occur. This can be done on an account of the brain areas involved during seizures.

EEG is one of the most common means used for detection of these seizures in humans. EEG is very informative and easy to access clinical tool to evaluate human brain activities. Though time domain recognition is also possible for EEG analysis but it is inadequate which results in the intercession of some automation and computer techniques for this purpose.

Many applications have been developed regarding analyses and classification of electrical activities of the brain. The working models or applications involve various complex methods such as signals acquirement, pre-processing of that acquired signal,

decomposition of the EEG signal and then the classification of the extracted features. Many models are in existence for detection of seizures.

Leach *et.al.*, [5] used three different protocols for acquisition of EEG signals: r-EEG, after sleep deprivation EEG, and after oral temazepam and concluded that sleep deprived EEG is much suitable in case of seizures. The author concluded that sleep deprived EEG have better sensitivity and it is better than those of r-EEG and DI-EEG. Shoeb *et. al.*, [6] used wavelet decomposition method with support vector machine as a classifier and spatial distribution method is also used in their model. Their system detected 131 out of 139 EEG signals but also declared 17 false detections. Rosso *et. al.*, [7] proposed a system which used wavelet energy and wavelet entropy for the analysis of EEG using classifiers based on Shannon and Trellis code tree. The authors also reviewed that quantifiers based on wavelet decomposition tools and also self organized rate is triggered by epileptic focus.

Srinivasan *et.al.*, [8] proposed a model using Elman network, recurrent neural network. The network used both time and frequency domain features of EEG signals and it was concluded that result obtained by this network with single input were much higher than that using multiple inputs. Srinivasan *et. al.*, [9] designed a system that used approximate entropy as an input feature and neural network classifier is used for classification purpose. Zandi *et. al.*, [10] designed a wavelet based system which used moving window analysis. G.Chen [11] used dual tree complex wavelet-fourier features. The author demonstrated an EEG seizure detection method by using the dual-tree complex wavelet fourier features. EEG database from the University of Bonn was used to test the system.

Shoeb *et. al.*, [12] proposed a system that used machine learning approach for patient specific classifier that detect onset of epileptic seizures. Omerhodzic *et. al.*, [17] proposed an algorithm for classification of EEG signal based on. DWT used with the MRA is applied to decompose EEG signal at resolution levels of the components of the EEG signal then feed forward neural network is used for classification according to the percentage distribution of energy features and their results shows that the proposed classifier has the capability to recognize and classify EEG signals correctly.

This paper is an extension of [17] and also presents a novel approach for classification of EEG signals of epileptic and healthy subjects. The decomposition of EEG signals has been done with the help of debauches five decomposition technique (db5) and dissimilar parameters such as energy distribution, current gradient are detected. The support artificial neural network has been used for classification of signals with different training algorithms and their regression and overall accuracy is compared accordingly.

This paper is organized as follow. The brief introduction and related literature survey has be covered in Section I. Section II of the paper includes the proposed methodology. The simulation setup and results are given in Section III. In Section IV, conclusion of the paper is given.

1.1. EEG Signals

EEG signal acquisition is the most important and most informative tool used these days due to its advantages over other acquisition techniques [13]. The electrical activities of the cerebral neurons spread throughout the head. These electrical signals also reach the scalp and can be easily detected by electroencephalogram (EEG) by placing the electrodes over the scalp in 10-20 International system of electrodes placement recognized all over the world. The EEG shows patterns of normal or abnormal brain electrical activity. Some anomalous patterns may occur with a number of unlike conditions.

EEG signals can be categorized into different frequency bands according to their frequency such as alpha (α), beta (β), gamma (γ), delta (δ) and theta (θ). Table I gives a brief description of these frequency bands [14].

1.2. International 10-20 System

This system of electrode placement is a recognized system which describes the location of electrodes to be placed over the scalp for the acquisition of the EEG signals. Figure 1 depicts the different points for the location of the electrodes. The numeric '10' and '20' are written which means the electrodes must be placed either 10-20% of the total front-back or right-left distance of the human skull.

Table 1. Brief Description of Different Frequency Bands of EEG Signals [14]

Signal	Brain Location	Frequency Band	Description
Delta (δ)	Frontal(adults) Posterior(children)	Below 4Hz	Sleep time, frequent in babies. Active in attention tasks.
Theta (θ)	Different locations	4-8Hz	Mostly found in young children Active in drowsiness or arousal in older children and adults Idle state Found to be spike when a person in attempting to repress action or response
Alpha (α)	1.Posterior, both sides 2.Higher in amplitude on dominant side 3.Central sites at rest	8-12Hz	Relax or Reflecting state Closing of eyes.
Beta (β)	Both on left & right side of brain Symmetrical distribution activity Most evident frontally	12-30Hz	Alert or focused, active, busy state
Gamma (γ)	Both left & right sides of brain, midline to front and back	30-100Hz	Sensory processing Short term memory activities

The different letters have been assigned to different locations for the ease of identification of lobe and hemisphere of the brain. The odd number describes left hemisphere whereas the even number describes the right hemisphere of the skull. This system uses two reference points, one at nasion (above the nose) and other at inion (the bony lump at the base of the skull).

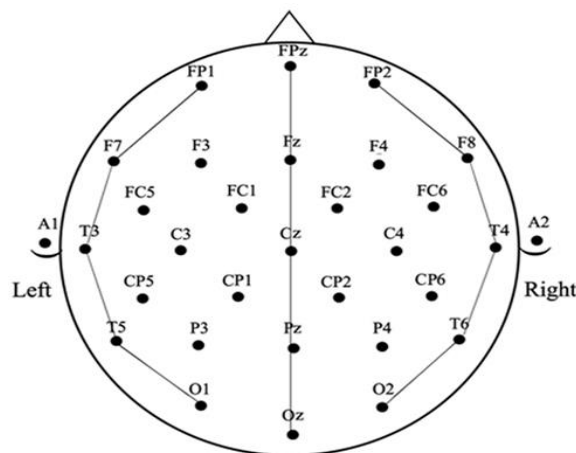


Figure 1. International 10-20 System for Electrode Placement Over Scalp

1.3 Wavelet Transform

The decomposition of the signals can be done with different decomposition techniques according to the type of the signal, stationary or non-stationary signal. If the signal does not vary much with respect to time that is if the signal seems to be ideal over long period of the time then it is said to be stationary signal and if it varies with respect to time it is referred as non-stationary signal [15]. For stationary signals Fourier transform is the generalized technique being used for decomposition. But it is not suitable for signals like EEG signals as it is a non-stationary signal. EEG signals contain a number of non-stationary characteristics. Its decomposition can be done using wavelet decomposition method. Figure 2 views the wavelet decomposition tree of EEG signal. The signals are passed through low-pass and high-pass filters for decomposition and the filter outputs are decimated by the factor of two to obtain approximated (A1) and detailed (D1) coefficients. Further, approximated coefficients are sent to next stage for repetition of the procedure and it is carried out repeatedly till the signal is decomposed at desired level.

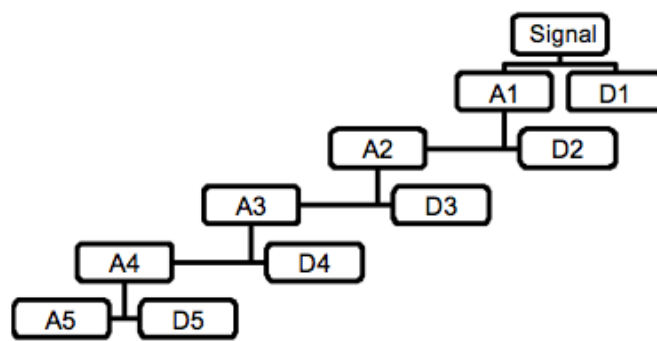


Figure 2. Wavelet Decomposition Tree [15]

In wavelet transform, decomposition is done on the basis of time-scale as well as frequency-scale and further compression of the signal is also done. Wavelet transform uses a mother wavelet to derive its different sets of wavelet functions.

1.3.1. Wavelet Families

There exist different wavelet families, daubechies (db), coiflets (coif), symlets (sym), biorthogonal (bior), which are described briefly in Table II.

Table 2. Different Wavelet Families

Wavelet Families	Wavelets
Daubechies	db1 or haar, db2,db3,.....db45
Coiflets	coif1, coif2, coif3, coif4, coif5
Symlets	sym2, sym3, sym4,.....sym45
Biorthogonal	'bior1.1', 'bior1.3', 'bior1.5' 'bior2.2', 'bior2.4', 'bior2.6', 'bior2.8' 'bior3.1', 'bior3.3', 'bior3.5', 'bior3.7' 'bior3.9'

The decomposition matrices L and H are given as:

$$L_{N/2,N} = \begin{bmatrix} l(1) & l(0) & \dots & 0 \\ l(3) & l(2) & l(1) & l(0) \\ 0 & l(L-1) & \dots & l(0) \end{bmatrix}$$

$$H_{N/2,N} = \begin{bmatrix} h(1) & h(0) & \dots & 0 \\ h(3) & h(2) & h(1) & h(0) \\ 0 & h(H-1) & \dots & h(0) \end{bmatrix}$$

Also the initial signal 'x' is decomposed into two sequences $h = Hx$ and $l = Lx$ after passing it through high-pass and low-pass filters respectively and hence their components are saved in h and l respectively. Then the coefficients are chosen which are used as feature vectors.

1.4 Energy Distribution

Energy distribution (ED_i) of the decomposed EEG signals is identified using Parseval's Theorem. The theorem states that energy of the deformed signal can also be partitioned at different resolution levels, i.e.,

$$ED_i = \sum_{j=1}^N |D_{ij}|^2, i = 1, 2, \dots, l \quad \dots\dots\dots (i)$$

$$EAI = \sum_{j=1}^N |A_{lj}|^2 \quad \dots\dots\dots (ii)$$

where l is the level of decomposition of the signal [17] and ED_i represents the energy distribution of the detailed coefficients at different decomposition levels and EAI represents the energy distribution of approximated coefficients.

1.5 Artificial Neural Networks

Artificial neural network is a mathematical tool that mimics some functional aspects of a biological neuron network. It consists of groups of interconnected artificial neurons. The low-level executions of cerebral neurons are replicated by cells and their networks depicting exact functioning synthetically is done using artificial neural networks.

The different neural networks have different learning algorithms and architectures. They also vary fundamentally in the way they learn or work. The most frequently used training algorithm in classification is back propagation algorithm which uses supervised learning technique. The main aim of this algorithm is to reduce errors and train the network continuously until it learns the data. One iteration of this algorithm can be written as $XK_{+1} = XK - \alpha K gk$, where XK is a vector of current weights and biases, gK is current gradient and αK is learning rate of the network.

1.6 Support Vector Machine

It is another technique used for classification and regression. SVM was first heard in 1992, introduced by Boser, Guyon, and Vapnik in COLT-92 [18]. SVMs are a set of related supervised learning methods used for classification and regression. They belong to a family of generalized linear classifiers. It mainly uses machine learning theory to maximize the accuracy of predicting the result by avoiding the over-fitting of the data.

SVM selects the hyper planes that maximize the margin, i.e. the distance between the nearest training samples and the hyper planes [20]. The basis of SVM is to map data into a high dimensional space and find a separating hyper-plane with the maximal margin according to Cover's theorem on the separability of patterns. SVM has been used to classify feature vectors for binary [21] and multiclass problems [22]. It has also been successfully used in a large number of synchronous HMIs. Such a classifier is regarded as a linear classifier, since it uses one or several hyper planes. Nevertheless, it is also possible to create a SVM with non-linear decision boundary by means of a kernel function $K(x,y)$. Non-linear SVM leads to a more flexible decision boundary in data space which may increase classification accuracy. For example figure 3 shows two groups of

data and separating hyper planes that are lines in a two dimensional space. There are many linear classifiers that correctly classify the two groups of data such as 11, 12 and 13.

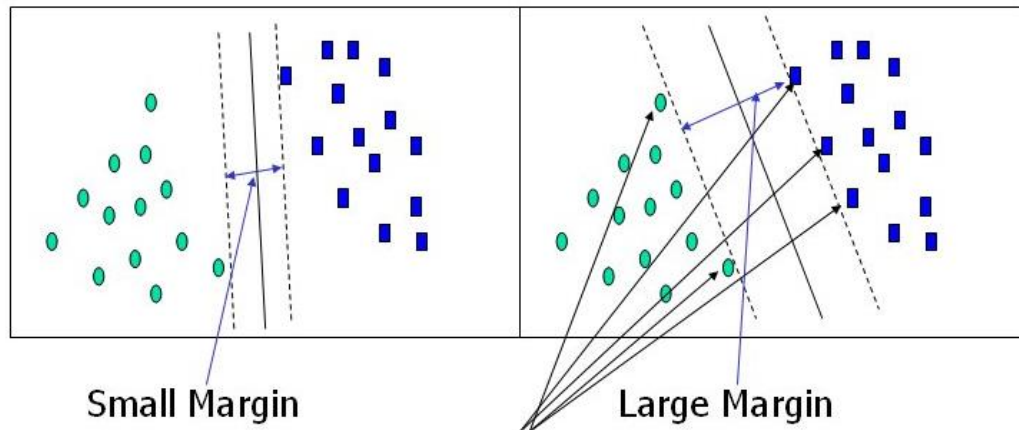


Figure 3. Support Vector Machine

2. Methodology

The algorithm block diagram for the proposed system is shown in Figure 4. It is divided into three main stages: acquisition stage, feature extraction stage and the classification stage.

In data acquisition stage, the brain electrical impulses are detected by placing electrodes on scalp. The head box used in acquisition may also perform noise reduction; the pre-processing stage prepares the signals in a suitable type of signal so that it can be further processed in desired form. The feature extraction stage maps the pre-processed signals onto a vector which contains effectual and discriminant features. The last stage, *i.e.*, the classification stage uses the feature vectors and arrange them in different classes as per desired by the system.

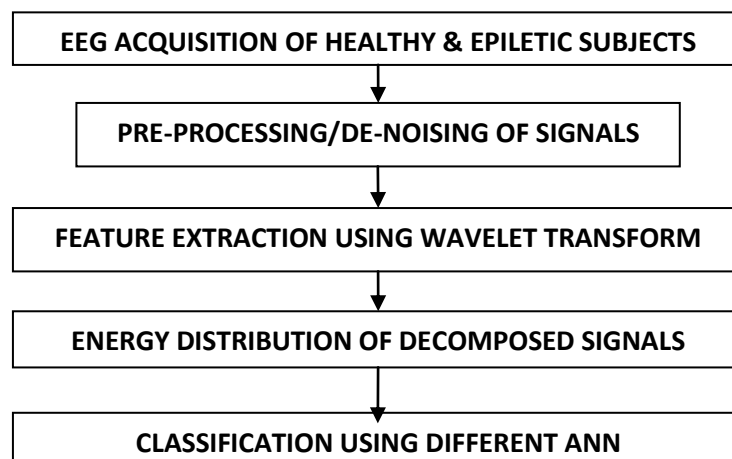


Figure 4. Algorithm for the Proposed System

3. Methods

3.3 Participants

30 healthy subjects and 30 epileptic patients participated in this study. The ethical statement was taken before acquiring the signals. Their vision was normal or corrected to normal vision. The age ranged from 21 years to 28 years, with a mean of 23.65 years. No one of them was naive to the BCI equipment and paradigm. EEG was recorded in relaxed state continuously for 4 minutes. Each session contains 20 trials. Subjects were required to maintain full visual concentration

3.4 Apparatus

RMS EEG-32 Super Spec system was used to extract EEG signals of different subject. The system ensures high resolution, authentic data acquisition through its software and head-box. This system includes the head-box, the adapter, the connecting cables, the electrodes and PC as shown in Figure 6.

The head-box is used for connecting electrodes from the scalp to the hardware unit. The signal generated is amplified and then sent to adapter box for signal conditioning. The digital signal generated is then displayed on Super Spec software designed for EEG signals.

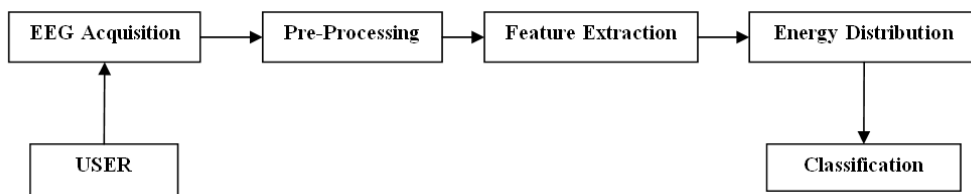


Figure 5. Block Diagram of the Proposed System

The head box minimizes noise pickups. The total integration of analog and digital processing in compact head box gives excellent signal to noise ratio. It can acquire simultaneously 32 channel raw data and also checks true AC impedance online. The brain mapping colour coding can also be done with the head box as per international standard.



Figure 6. Experimental Setup for EEG Acquisition

4. Results and Discussion

Wavelet transform uses a mother wavelet to derive its different sets of wavelet functions. This system used db5. Figure 7 shows the decomposition of EEG signals of normal patients whereas figure 8 shows decomposition of epileptic EEG signal. In this figure detail coefficients are represented as D1, D2, D3, D4, D5 and the approximated coefficient is represented as A5.

The energy distribution for each set of input signals *i.e.*, for epilepsy patients and for healthy subjects are shown in Figure 8 and Figure 9 respectively. It can easily be recognized that the energy distribution of normal/healthy subjects in D3 and D4 (beta, alpha) are approximately equal and its total value is around 30% and that of epilepsy patients is approximately 50%.

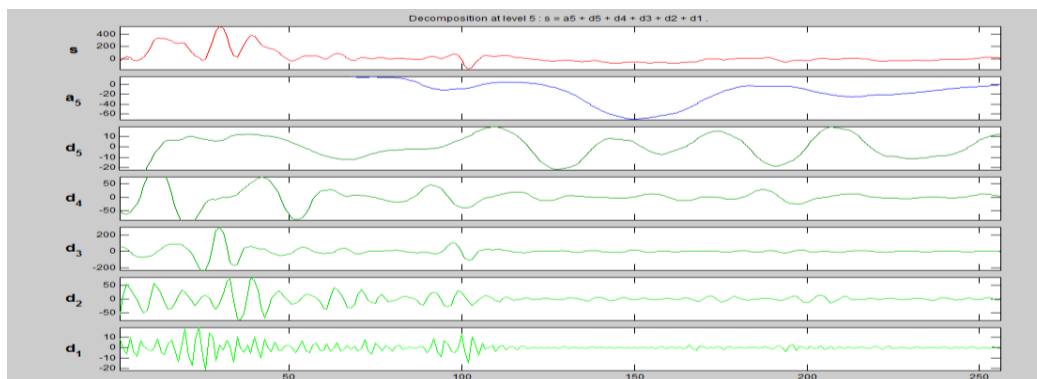


Figure 7. Decomposition of EEG Signals of Normal Patients

The energy distribution of D5 (theta) of normal patients is approximately 20% and that of epilepsy patients is above 40%. It can also be seen that A5 (delta) energy distribution of epilepsy patients is less as compared to that of normal patients. Table III shows the average values of detailed energy coefficients and approximated energy coefficients for both healthy as well as epilepsy subjects.

Table 3. Average Energy Distribution of Decomposed and Approximated Coefficients

Average energy Distribution of Normal Subjects		Average energy Distribution of Epilepsy Subjects	
EA5	47.68686	EA5	63.84576
ED1	0.11135	ED1	0.166008
ED2	4.025968	ED2	1.484796
ED3	17.19991	ED3	9.093766
ED4	20.48524	ED4	11.16387
ED5	10.49068	ED5	8.854353

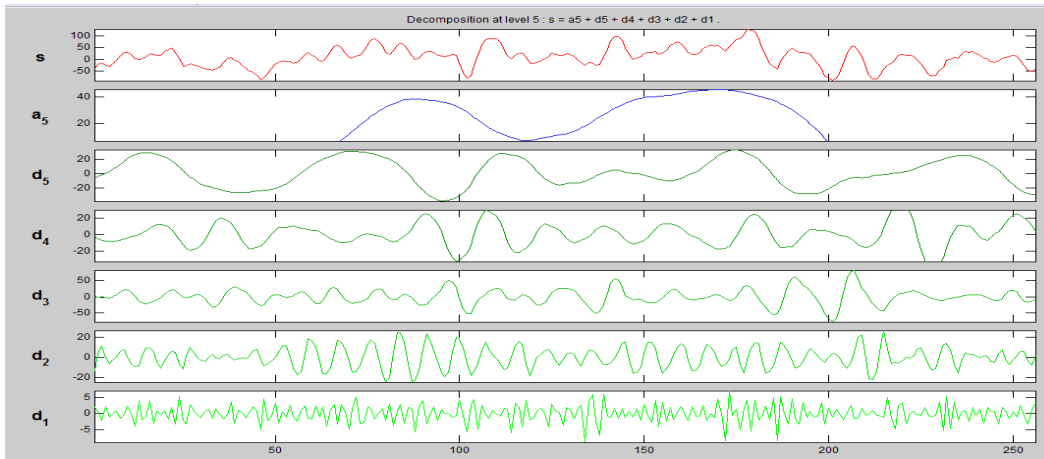


Figure 8. Decomposition of EEG Signals of Epileptic Patients

These energy distribution percentages can easily be used as classifier inputs for classification of these EEG signals. Six dimensional feature sets for training and testing data were constructed based on these energy distribution percentages.

The total size of training or that of testing data is 6 X 300. These vector inputs are applied to the neural network as input vectors. We used different training algorithms to test our neural networks such as Levenberg-Marquardt Algorithm, Bayesian Regularization Algorithm and One Step Secant Algorithm.

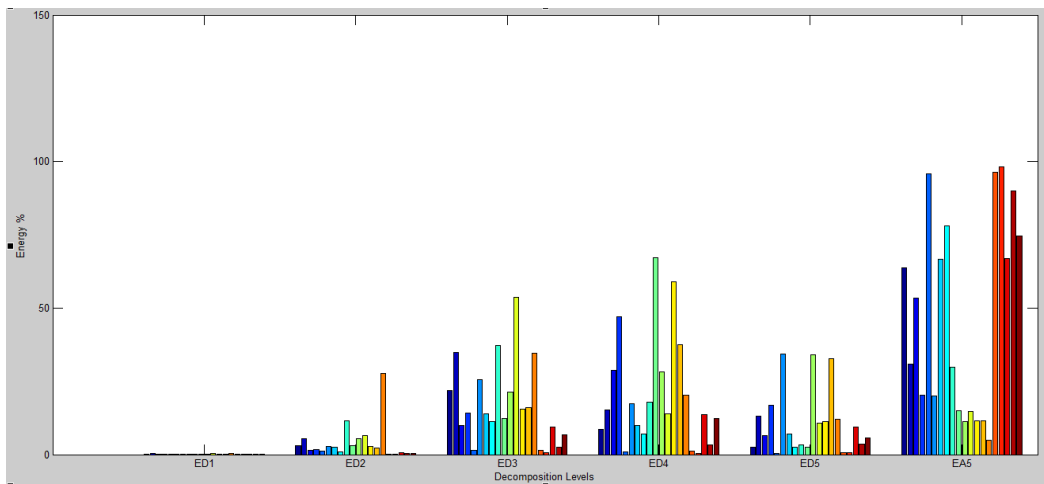


Figure 9. Energy Distribution of Decomposed Signals for Epilepsy Patients

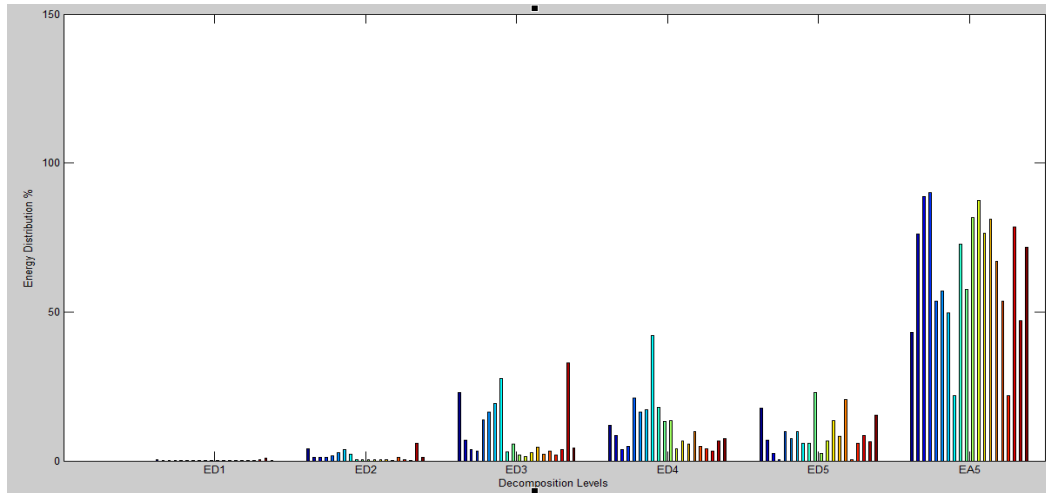


Figure 10. Energy Distribution of Decomposed Signals for Healthy Subjects

4.3 Results with Different Training Algorithms

The system design and parameters used while testing input vectors with Levenberg-Marquardt Algorithm are given in Table VI. The overall regression or accuracy of the system when feed forward algorithm used is 93.9%. The training, testing and the overall regression is shown in Figure 11.

Table 4. Training Parameters of Feed Forward Back Propagation Algorithm

Architecture	Parameters
Number of Layers	3
Number of Neurons on layers	INPUT: 6, HIDDEN: 5, OUTPUT: 1
Initial Weights and Biases	Random
Learning Rule	Levenberg-Marquardt Algorithm
Mean-Squared Error	$1e^{-01}$

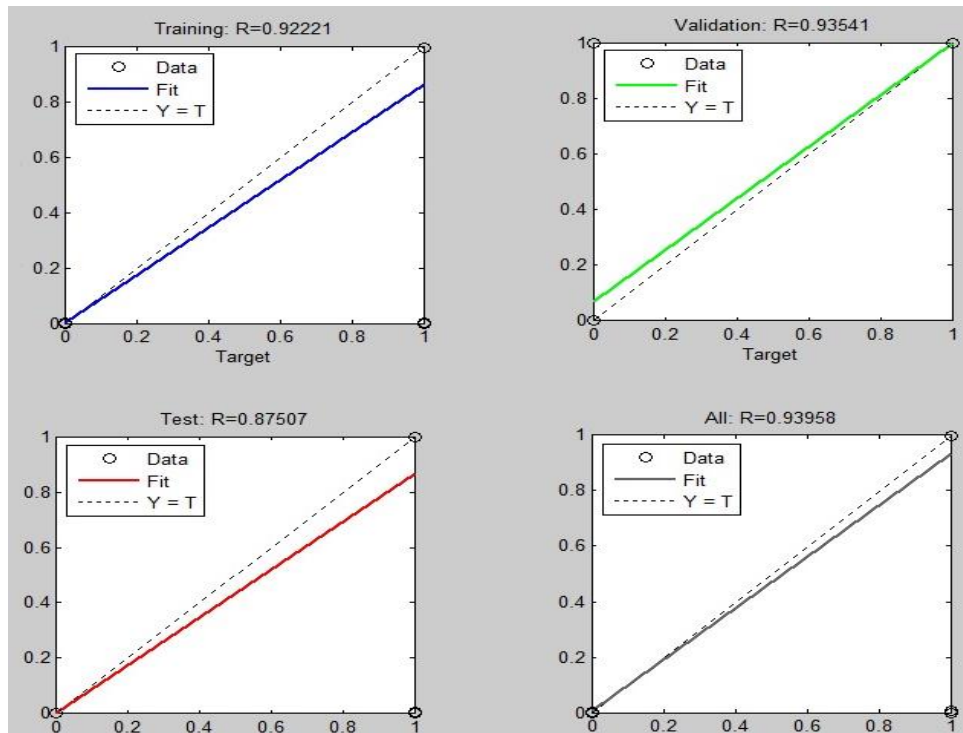


Figure 11. Regression Plot of the System using Levenberg-Marquardt Algorithm

5. Conclusion

Epilepsy is a perilous neurological disease covering about 4-5% of total population of the world. Its main characteristics are seizures which occur due to certain disturbance in brain function. EEG is the technique used in this paper to acquire the brain signals of both epileptic and healthy persons. As EEG signals are non-stationary signals so wavelet decomposition technique is preferred to decompose these signals and the energy distribution of decomposed signals are considered for the classification of EEG signals. For classification, the neural network system was tested with different training algorithms such as Levenberg-Marquardt Algorithm. The results showed that when Levenberg-Marquardt training algorithm was used the accuracy comes out to be 93.9% which is better than other training algorithms. Further, the same inputs were applied to support vector machine classifier and the results obtained were 99.97%.

References

- [1] R. Labat, "Traité akkadien de diagnostics et pronostics médicaux", Paris/ Leiden: Académie Internationale d'Histoire des Sciences/Brill, (1951), pp. 80–1, 188–99.
- [2] J. Longrigg, "Epilepsy in ancient Greek medicine: the vital step", *Epilepsy & Behavior Journal*, (2000), pp. 12–21.
- [3] E. Magiorkinis, K. Sidiropoulou, and A. Diamantis, "Hallmarks in the history of epilepsy: Epilepsy in antiquity", *Epilepsy Behavior*, vol. 17, no. 1, (2010), pp. 103–108.
- [4] S.Garg, R.Narvey, "Denoising and Feature Extraction of EEG Signal Using Wavelet Transform", *International Journal of Engineering, Science & Technology*, vol. 5, (2013), pp. 1249-1253.
- [5] J. Leach, L.Stephen, C. Selveta, M.Brodie, "Which EEG for Epilepsy? The relative usefulness of different EEG protocols in patients with possible epilepsy", *International Neuro Neurosurg Psychiatry*, (2006), pp. 1040-1042.
- [6] A. Shoeb, H. Edwards, J. Connolly, B. Bourgeois, S. Ted Treves, and J. Guttag, "Patient-specific seizure onset detection," *Epilepsy Behavior*, vol. 5, no. 4, (2004), pp. 483–498.
- [7] O. a. Rosso, M. T. Martin, A. Figliola, K. Keller, and A. Plastino, "EEG analysis using wavelet-based information tools", *Journal of Neuroscience Methods*, vol. 153, no. 2, (2006), pp. 163–182.

- [8] V. Srinivasan, C. Eswaran, and A. N. Sriraam, "Artificial neural network based epileptic detection using time-domain and frequency-domain features", *Journal of Medical System*, vol. 29, no. 6, (2005), pp. 647–660.
- [9] V. Srinivasan, C. Eswaran, and N. Sriraam, "Approximate entropy-based epileptic EEG detection using artificial neural networks," *Transactions on Information Technology in Biomedicine*, vol. 11, no. 3, (2007), pp. 288–295.
- [10] A. S. Zandi, G. a Dumont, M. Javidan, R. Tafreshi, B. a MacLeod, C. R. Ries, and E. Puil, "A novel wavelet-based index to detect epileptic seizures using scalp EEG signals", *Conf. Proc. Engineering in Medicine and Biology Society*, vol. 2008, no. 2, (2008), pp. 919–922.
- [11] G. Chen, "Automatic EEG seizure detection using dual-tree complex wavelet-Fourier features", *Expert System Application*, vol. 41, no. 5, (2014), pp. 2391–2394.
- [12] A. Shoeb and J. Guttag, "Application of Machine Learning To Epileptic Seizure Detection", *Proceedings of the 27th International Conference on Machine Learning*, (2010) pp. 975–982.
- [13] P. Bhatia and A. Sharma, "Different Techniques for Extracting Brain Signals for Human Machine Interface, a Review", *Australian Journal of Information Technology and Communication*, vol. 2, no. 2, (2015), pp. 31–34.
- [14] S. Garg and R. Narvey, "Denoising and Feature Extraction of EEG Signal Using Wavelet Transform", *International Journal of Engineering, Science & Technology*, vol. 5, (2013), pp. 1249-1253.
- [15] G. Kaushik, H. P. Sinha, and L. Dewan, "Biomedical Signals Analysis by Dwt Signal Denoising with Neural Networks", vol. 3, no. 1, (2013), pp. 1–18.
- [16] I. Omerhodzic, S. Avdakovic, A. Nuhanovic, K. Dizdarevic, "Energy distribution of EEG signals: EEG signal wavelet-neural network classifier", *arXiv preprint arXiv:1307.7897*, 2013.
- [17] P. K. Bhatia, A. Sharma and H. Kumar, "A Comparative Approach to Feature Extraction Techniques for Human Computer Data Acquisition Pre-Processing Feature Control Interference", *4th International Conference on Wireless Networks and Embedded Systems : An approach to Clean and Sustainable Technology(WECON-2015)*, (2015).
- [18] M. Sharanreddy, "Brain Tumor Epilepsy Seizure Identification using Multi- Wavelet Transform , Neural Network and Clinical Diagnosis Data", vol. 67, no. 2, (2013), pp. 10–17.